



T-max 600+

High resistance to Aphanomyces Race 1 and Race 2, yield, and dark green foliage!!

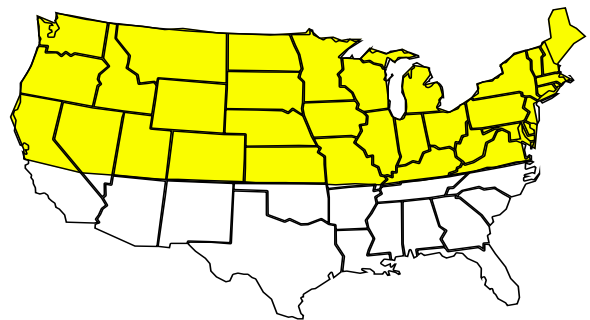
Product Description

T-max 600+ is your ultimate choice where Aphanomyces is a problem. This line will give you outstanding persistence and winter survival. T-max 600+ offers high yield plus great quality. T-max 600+ has very fast regrowth and deep green color. This variety will handle all soil types and gives you an

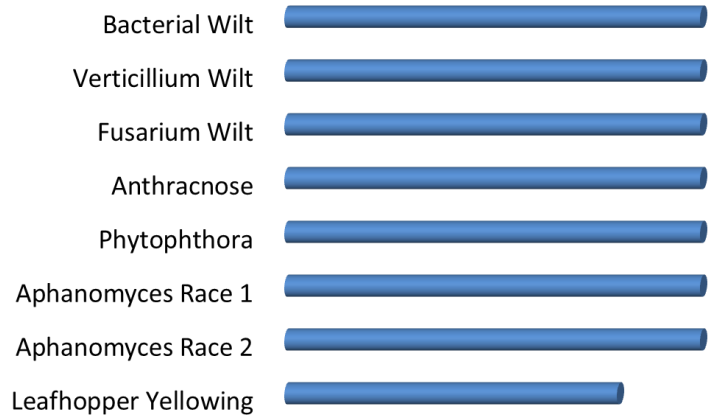
outstanding disease resistant package. T-max 600+ can handle heavy wheel traffic and will also work in wetter soils. T-max 600+ is an outstanding choice for the producer who demands the complete package.

Agronomic Characteristics

Winter Survival	1.9
Recovery	Very Fast
Wisc. Disease Rating	35/35
Leaf to Stem Ratio	Excellent
Fall Dormancy	4.3
Forage Quality	Very High



Disease and Pest Resistance



High Resistance (HR rating) to Race 2 Aphanomyces!!

S LR MR R HR